

Consignment Tracking & Management System (CTMS) For Distillery/Liquor Industry



GPS Tracking Specialists

REDUCE Labour, fuel, vehicle & management.

INCREASE productivity, safety & revenue

IMPROVE your customer satisfaction & your bottom line



GTI is a pioneer in developing & deploying GPS based CTMS system for the distillery / Liquor Industry. It provides end-to-end solution including manpower so that clients are free from any technological & logistics hassles. GTI's solution is catering to thousands of trucks across several states & Industries.

The CTMS solution developed specifically for the Liquor Industry focuses on providing ultra-modern client specific solution adhering to the needs of Excise at the right price point.



Statutory Obligations of Distilleries / Bottlers (Irrespective of compulsory tracking is enforced or not) :

- Follow the prescribed routes/Check post, without any diversion.
- Adhere to transit time prescribed by Excise.
- In case of any partial or total loss in transit, penal Excise Duty is charged from Selling Distillery/Bottler,
 - Which is many times of cost of goods
 - Revenue loss on each shipment is to the company as well as the Excise Department.
 - Heavy penalties are levied with onus on the Seller.
- Distillery/Bottler to exercise control on movement of goods in transit and provide better customer Service.
- In case of any genuine need, mechanical failure or traffic diversion, Seller can make alternate arrangements.
- Facilitates better Management control.
- Transparency in operation, logistics & generation of tax revenues.

Compulsory Tracking & requirements by Excise Dept.

- GPS devices to be installed in all vehicles.
- Only Vehicles with GPS devices will be given exit permission.
- Control room with 24x7 manpower to monitor the Trucks in transit.
- Information about any exception to be immediately given to :
 - Company's Manager &
 - Excise Department
- Action to be taken on the aforesaid exception in real time.

Other data maintained by GTI CTMS Software

- Transporter details.
- Driver details.
- Vehicle's Registration details.
- Route details.
- Approved Vs. Actual Time taken & distance covered by the Vehicle.
- Route deviations & much more.

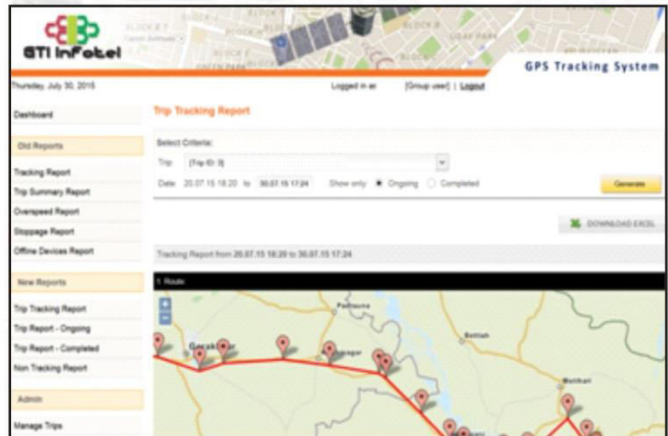
GTI's CTMS Solution Vs. GPS Tracking provided by Transporters

S.No.	Features	GTI's CTMS	Transporter GPS
1.	On Demand 24x7 Tracking	Yes	No
2.	Distiller Specific "Trip" Generation & Retrieval	Yes	No
3.	Distiller Specific Alerts & Reports	Yes	No
4.	Historical reports	Yes	No
5.	Works on Any market Vehicles	Yes	Transporter Dependent
6.	Accuracy & trust (being independent party)	Yes	No
7.	Business Analytics	Yes	No

GTI's CTMS Features

GTI's CTMS Features :

- End-to-end solution with manpower being supplied by GTI & responsible to pick up the GPS device from the Destination/Depot back to the Origination/Factory.
- System works on any market Vehicles.
- No Capital Expenditure by the Clients.
- No reliance on transporter to fix a GPS device.
- Track without Transporter involvement.
- Real-time location.
- Small & Intelligent GPS tracking device with long Lasting Battery.
- Cloud based Application.
- Option to take out multiple Alerts & Reports.



754	29-07-2015 21:10:30	Location	32.932	1.354.40	1.33 Km From Rangpur, Kharagpur, Assam, India	
755	29-07-2015 21:41:00	Stopped	0	1.357.44	2.32 Km From Rangpur, Kharagpur, Assam, India	
756	29-07-2015 23:11:01	Started	30 minutes	27.979	1.364.32	2.30 Km From Rangpur, Kharagpur, Assam, India
757	29-07-2015 23:40:50	Location	0.24	1.366.90	0.30 Km From Baranagar, Baranagar, Assam, India	
758	30-07-2015 00:11:01	Location	0.003	2.004.24	0.30 Km From Dibrugarh, Dibrugarh, Assam, India	
759	30-07-2015 00:41:01	Location	26.754	2.016.70	0.70 Km From Dibrugarh, Dibrugarh, Assam, India	
760	30-07-2015 01:11:02	Location	27.000	2.020.01	1.71 Km From Dibrugarh, Dibrugarh, Assam, India	
761	30-07-2015 01:40:50	Location	24.903	2.032.29	0.60 Km From Dibrugarh Road, Dibrugarh, Assam, India	
762	30-07-2015 02:11:02	Stopped	0	2.036.04	0.30 Km From Dibrugarh Road, Dibrugarh, Assam, India	
763	30-07-2015 14:40:10	Started	740 minutes	0.916	2.073.70	2.70 Km From Kharagpur Detouring, Dibrugarh, Assam, India
764	30-07-2015 15:10:00	Location	18.414	2.084.07	0.30 Km From Charing, Charing, Assam, India	
765	30-07-2015 15:40:12	Location	24.726	2.104.92	0.60 Km From Patgaon, Kharagpur, Assam, India	
766	30-07-2015 16:10:10	Over-speed	40.000	2.121.79	0.70 Km From Kharagpur, Kharagpur, Assam, India	
767	30-07-2015 16:40:10	Location	17.153	2.132.40	0.21 Km From Kharagpur, Kharagpur, Assam, India	
768	30-07-2015 17:10:11	Stopped	0	2.140.33	0.30 Km From Goolagachan, Kharagpur, Assam, India	
Time taken		238 hours, 40 minutes and 58 seconds			Route Time	216 hours, 0 minutes and 0 seconds
Distance Traveled		2,140.33 km			Route Distance	2122 km
Over-speed Time		100 hours, 10 minutes and 0 seconds			Over-speed Left	

Automated Alerts & Reports :

- Shipment Start & End.
- Stoppage/Stops with the actual time duration.
- Excise Route Deviation.
- Shipment status at any time.
- Actual Transit time/distance vs. Estimated Transit time/distance.
- Detention Report.
- View all Vehicles together.
- View all active/completed trips.
- Export to any spreadsheet or ERP for further analysis.

Implementation Process

GPS Asset Tracker with 7-24 days battery life is sent with the Vehicle

Specific "Trip" is created & the Vehicle is tracked on an online system & required reports & alerts generated

Once reaching the destination, the GPS Asset Tracker device is taken out of the vehicle & returned to the Origin via courier

The same device is then used for another trip after due charging.

A Control Room is established at the Seller Premises with Manpower that is responsible for all logistics, reporting & action.

Database is maintained for the Device/Vehicle No./Driver/Contact Details/Transporter Details/etc. for immediate & future analytical use

GTI Infotel Pvt. Ltd.

A-51 Sector 8, Noida, UP 201301 (India)

Web: <http://www.gtiinfotel.com>

Email: info@gtiinfotel.com

Phone: +91-120-4273656, +91-97167-06167

